



ROCK TALK

White Mountain Gem & Mineral Club
Member of RMFMS and AFMS
Volume 13 Issue 5 May 2009

Elected Officers

President Pete Scholten
(928)537-1874
Vice President Open
Secretary Tonie MonDragon
(859)338-2296
Treasurer Larry Legge
(928)537-2524
Editor Charlene Bingell
(928)367-4062
Field Trip Chairman-
Mike Gaspar
(928) 368-0415

Board Members:

Laura Scholten
(928)537-1874
Kathleen Varhol
(928)368-9556
Eunice McQuiston
(928)536-7209
Ursula Wilson
(928)532-5703

Volunteer Positions:

Show Chair Open
Advertise & PR Open
Librarian Jan Petrtruzzi
(928) 368-4688
Door Prizes/50-50 Raffle
Kathleen Varhol
Auctioneer Bill Stalder
928-368-4496
Highway Clean Up
Open
Coalition Trips/Historian/Sunshine
Eunice McQuiston
(928)536-7209
Education (Schools/Libraries)
Open

President's Message

May, 2009

Once more into the breach. Here we go folks our annual Gem and Mineral Show is upon us. We can use all the help we can get. We are hoping to have high school and jr. high school students be the muscle but there are some things that just have to be done by us. Putting up the display cases is a "case" in point. Fred is to be the director only this year and I would like someone else to take on the responsibility of learning how they go together as well so Fred can relax after doing this all these years. I am sure Eunice can use some help setting up the UV display as well.

We need some multiplugs and extension cords for the electrical if some of you have some that we can borrow for the show. Please if you bring some make sure that you put your name on them with tape or some such.

Let's make this the best show ever. We will have about 20 dealers, let's have about 2000 visitors. That means we need to talk up the show to everyone we know or meet. There are lots of people out there who are interested we just need to let them know that this event is happening. So put up some show posters. If you were not at the meeting and would like some to put up please contact me. Word of mouth is a great way to advertise.

If you get a chance get out there and collect. There is no field trip this month. Of course with all the great material the dealers are bringing "collecting" that unique piece for you collection should be easy.

Have a great month, see you at the show.

Pete

"Rock Talk" is published monthly by The White Mountain Gem & Mineral Club, Inc. Any comments members wish to have published in "Rock Talk" need to be turned in or called in at the general membership meeting to the Editor.

Membership dues are \$15.00 for single membership and \$20.00 for couple/family.

Dues are due the first of January of every year along with a completed application.

Meetings are held at J.B.'s Restaurant on the Deuce of Clubs, Show Low, Az., 1st Tuesday of the month, social hour starts at 5:30/meeting at 6:30.

Meeting Minutes

Minutes of the White Mountain Gem & Mineral General Meeting
May 5, 2009

The meeting was called to order at 6:35 p.m. by President Pete Scholten. There were 21 members present and 5 guests who consequently became members. The new members are Curtis Kelly, Ron Ginn, Tim, Gloria and Clara Petty.

Larry Leggy made a motion to accept the April minutes as published and Bill Stalder seconded the motion. The minutes were approved unanimously.

Announcements: Louisa Barber would again bring her displays to our annual show, including a dinosaur track valued at \$20,000-60,000.

Treasurer Larry Legge gave his report

Editor Charlene Bingell gave her report and thanked Eunice for her submissions.

Fieldtrip Leader, Mike Gaspar gave his report on the April trip to the Payson area. There were 6 of our club members, 1 junior, and Payson club members. [See full report in this newsletter.] Mike made the suggestion that a fully equipped first aid kit be purchased for field trips. Mike announced that the June fieldtrip would be to the Club's crystal claims for our annual maintenance. [Note: It has been previously decided by the Club that only members may visit the claims and no guests.]

Eunice requested the Club allocate enough money for color copies of the Club brochure for distribution at the show. Sandra Angelo made the motion that color copies not to exceed \$100 be approved, Laura Scholten seconded the motion, and it was passed.

Under unfinished business Pete thanked Wayne & Jan, Pete S., Bill S. and Fred for helping him unbox the new tables and place them in the storage unit. Pete made a motion to give each of the workers a ticket for the annual drawing because of their help, seconded by David Bingell, and passed. The club now has a total of 89 tables.

Pete displayed the large banners made for the show by Karen Stokes and Eunice. They were very well received.

Pete provided flyers to distribute and post to advertise the show.

There was discussion about the student helpers who would be at the show to assist in set up and take down and how to compensate them. After discussion and several ideas, Ron Dale made a motion to compensate the students \$5 an hour with a matching contribution to their club affiliate, whether Jr. High Band, or High School Science Club. Charlene seconded the motion and it passed with one abstention. The students will be paid by check at the end of the show, and may accept tips from vendors that they help. The Club is only paying the students for the time they actually work for the Club. Set up will begin at 9am on Friday, May 22, both at the storage unit and at the school. Laura will check on possible security help, although the school is well protected from outside entry.

After discussion, it was decided that the members would like to continue the tradition of providing a pot luck dinner Friday night at the set up (which Kathy Amator) will organize. Kathy made a motion that the Club provide 2 hams for the dinner (with the members providing side dishes), and Laura seconded the motion. It passed with one abstention.

Kathy will also have the Special Olympics group selling lunch on Saturday and Sunday.

Under New Business, Larry brought up the subject of the copier and nonperformance by the business who sold us the maintenance agreement. It was decided to give them one more chance to make good on the agreement before we took action.

Pete mentioned that he had 23 or 24 5th graders for a field trip to his house and shop during the last week of April as part of our education commitment to the community. Bill Stalder reported that he and Linda and Tonie put on a mini Gem & Mineral Show at St. Anthony School for Kindergarten through 3rd grade that was enjoyed thoroughly by all the students.

At 7:42 the meeting took a 10 minute break.

The meeting resumed and Tonie MonDragon provided the education program with the assistance of Sandra Angelo. The subject was enamel bead making and the history of the art form. [Report elsewhere in this newsletter.] Bill Stalder will present next month's education program.

Pete thanked Patricia Yovonovitz for the donation of two books to the Club library.

Under New Business, Pete reported that Tri Sports again would like to use our tables for their event. Pete made the motion that as long as he was associated with both our Club and Tri Sports he would like permission for them to use our tables for their annual event. The motion was seconded by Eunice and passed unanimously. Tri Sports historically donates \$300 to the club for the use of the tables.

A question was raised about our usual highway clean-up date for this coming Saturday. There is no chairman for this community service. After discussion, Nanz offered to pick up the bags and vests from ADOT although she couldn't actually participate in the clean-up due to her recovering from knee surgery. The members who volunteer to do this service will meet at K-Mart parking lot at 8:15 and car pool to the mile the Club sponsors and do the clean-up.

The door prizes and 50/50 drawing were awarded to John Scholten (a bag of cabochons), Gary Amator \$8, and Pete Suppes a rose quartz fountain. The meeting adjourned at 8:30 and the silent auction closed a few minutes later.

Respectfully submitted,

Tonie MonDragon, Secretary

We need a volunteer for President- then Pete would step down to Vice President to fill the spot that Nanz is vacating- or a Secretary and Toni will step in for Vice President- or just a Volunteer for **Vice President**- your duties would be to fill in as needed for the President in the President's absence and you would be responsible for the education portion of the clubs meetings- and attend board meetings- PLEASE STEP FORWARD IF YOU CAN HELP THE CLUB-PLEASE VOLUNTEER!

Next Meeting

Mark your calendars: Our meetings are always the first Tuesday of the Month- Next month will be June 2nd- at JB's Restaurant on the Deuce of Clubs in Show Low- social hour starts at 5:30 meeting starts promptly at 6:30 PM

Roster Updates:

Editors note: For Changes - Corrections or Additions:
cdmailbox2002@yahoo.com 928-367-4062

Correcton on email address:

Brian Colleen Walski scottsmom@scottwalski.com

New Members:

William J Hoddy 1953 E Caroline Tempe, AZ 85284
480-820-6802 bjh85284@cox.net

Ron Ginn HC30 Box 35622 Concho, AZ 85225
480-294-731 wginn3@cox.net

Curtis Kelly 7541 Pinetree Lane Snowflake AZ 85937
928-229-0175 glowhound@gmail.com

Tim and Gloria petty - and Clara, PO Box 1729 Taylor, AZ
85939 redmoonglow@yahoo.com

Birthdays

Happy Birthday Everyone- May life be a constant celebration! No matter what your age!

June

Kathy Amator - 19
Sandra Angelo - 19
Sumner Christie - 10
Sandra Clark - 16
Eunice McQuiston - 24
Bill Henningsen- 29
Brian Walski - 14
Tim Petty -23

July

Charlene Bingell - 25
Bruce Emerson - 16
Erik Holmstrom - 31
Larry Legge - 21
Nanz Marshall - 10
Steve Miller - 12
Tonie MonDragon - 3
Rod Brewer- 30
Pete Scholten - 20

FIELD TRIPS

Field trip updates:

This April's field trip to Agate Mountain was great fun to those who went and for those that chose not, well you missed a chance to collect crazy lace agate. We had 5 members plus one new member join our club- Dan Krammer with 1 junior attending this trip. We could not ask for anything but great weather and it was some what windy, but all in all it was a great time. The roads were long and rugged as planned. It was much like taking a jeep tour with scenic views through out the ride. The month Of May the club voted for no trip and will proceed into June's field trip to the clubs claims. And with summer guests and members. I announce that I have planned some additional week day trips for those who would like to attend. Call in advance so we can make this happen. Until June - lets enjoy the summer.

Mike Gaspar

Field Trip Coordinator

May 22nd MSA Coalition trip

In cooperation with our MSA coalition field trip leader I am combining our local club trip and the coalition trip for May 2009. The trip is to a beautiful location in the Kaibab National Forest at Jacob Lake. The highway access from the Phoenix area is via I-17 north to Flagstaff and 89 to the junction of 89A west towards Lee's Ferry and continues on to the junction of 89A and 67 at Jacob Lake. The start date of the trip is May 22nd. I will probably arrive at Jacob lake about 2 to 3pm in the afternoon. At the 89A and 67 junction there is a CHEVRON gas station. That is a good place to meet and discuss plans for Saturday and Sunday as well as Monday for those staying that day. I will be returning on Monday.

My wife and I are going to stay at Kanab, Utah a 40 minute drive north of Jacob Lake. Jacob Lake has cabins and motel rooms but gets booked up early in May so ck as soon as your sure if not camping or RV ing. There's also Kaibab Camper Village close to Jacob

Lake for campers (tents) and RV ers. They also have one cabin there. I'll have maps for everyone at the Chevron station on Friday afternoon and again Saturday morning at about 8:30 am before we head out to the first site. I have not stayed at the Treasure Trail Motel in Kanab before but it seems to appear fairly good and their prices are reasonable. Remember this is a Memorial Day weekend so places fill up fast. Kanab has several motels.

Ed Nichols My email address is: epidote555@yahoo.com
home phone: 480-636-1251 cell phones won't work there
I'd appreciate it if anyone going would notify me so I can have some idea how many to expect.

SEPTEMBER

Magdalena Moments

New Mexico

If interested in fun, collecting, socializing with club members and guests, or just plain R R, now is the time to make reservations for Friday night, the 11th, and Saturday night, the 12th of September, 2009. Actual field trip day will be the 12th.

Sites are being considered at this time, our guide has been alerted, and our hosts at the Western Motel are anxious to welcome us back. Please call them at (575) 854-2417, and mention that you are rock club members. There are only a few rooms available at the Western, so it would be wise to secure your space now. There is an RV park in the rear if you wish to bring your home on wheels.

As time draws near, more info and particulars will be given. This trip has always proved to be great and not that far from home. Approximately 165 miles east on Hwy 60 from Show Low.

For the first timers, if you wish to learn a little more about this trip, call me (Eunice) at (928) 536-7209.

Eunice

Wyoming in July- Update

The White Mountain Gem & mineral Club – Show Low will Sponsor this trip as part of the Coalition of Rock Clubs of Arizona.

This trip will prove to be one of your collecting trips of a lifetime- beautiful scenery and many mineral and fossil sites will be available. Plan for several days if possible.

Arrive: in Kemmerer, Wyo on July 12, 2009 (southwest part of the state)

Meet: on July 13th at Creative Creations, 821 S Main (Antique and Fossil Store)

Time: 8:00 AM Wyoming time

Vehicle: 4 X 4 high clearance is preferred but I am sure sharing a ride can be arranged if you don't have this kind of vehicle

What you will find: The choices will be up to you. On the list so far is:

1. **Fish Fossils** at the quarries (featured on TV's Cash & Treasures Show) Tools for "fishing" will be provided if you do not have the correct ones.
2. **Star Crinoids** (near the quarries)
3. **Blue Forest Petrified Wood** (awesome wood)
4. **Wyoming Blizzard Rock** (geo-thermal formation of druze quartz)
5. **Jade Slicks** (a beautiful green)
6. **Gold Panning** (what is gold going for now?) With each sign up for gold panning event, you will also receive a GP Kit to take home with you. The kit includes panning sand with gold in it, 10" gold panning pan, tweezers, 1/2 oz vial to put your gold in, and a "How to Pan for Gold" book. This will take place in a mountain stream about 1/2 hour from Kemmerer.
7. **Sweetwater Agate** not the little pebbles you might know about, but agate still in the host rock. Absolutely fantastic – it's fluorescent! Brilliant shades of green and host rock fluoresces peach and orange colors. Size of specimens depends on how big a piece you can carry.

These sites are confirmed and additional sites will be added as time passes. You will be able to pick the place you want to go on a particular day as long as at least five (5) other rockhounds are interested in the same place on that day.

Fee: Each "event" (collecting area) will cost \$60.00 per person – cash, check, or credit card will be accepted. This fee will cover the cost of a guide for each area who will help and direct you to the best areas.

Accommodations: will be up to you to secure. May I suggest a few choices-

Energy Inn- 307-877-6901

Fossil Butte Motel- 307-877-3996

Best Western opens April 20th- \$94.99
307-877-3388

10% discount for AARP, etc.

Free Breakfast, Pool, Hot Tub,

Conference Center, Fridge & Micro-

Wave, Coffee Pot in each room

For RV'ers:

Riverside RV Park- 307-877-6634

Foothills RV Park- 307-877-6634

Camping at the Fossil Quarry will be allowed. must check in with host first.

The feedback on the two RV parks is not good. They will not commit to a space for you. There is a lot of on-going construction and they rent space to construction workers first.

More information contact the Kemmerer C of C at 307-877-9761 their web site is

www.kemmererchamber.com or email them at

chamber@hamsfork.net . If you are thinking about going

on this trip, I suggest you make your reservations **NOW**.

There is on-going construction in the area and by spring the rooms/spaces will be filled unless you have secured your own space.

What to bring: a good attitude. A bright smile, rock hunting gear which might include buckets to put your specimens in, old newspapers to wrap them in first, shovel, picks, a piece of rebar to stick in the ground till you hear the "clink" of a piece of wood, hat, sunscreen, chairs, etc; a small food/drink cooler, and a UV light if you have one. If you belong to rock club, please wear your name badge.

Rocks: Bring some trade or sell to other rocks hounds from different areas.

Our host in Kemmerer is **George Putnam of Wyoming Fossils LLC** (Creative Creations). He is working hard to provide everyone with interesting and great places – all within approximate 100 to 150 radius of Kemmerer. George's specialty is the fossil fish. In the quarry, he will show how to find, prepare, clean and preserve your fossils. In his store, you will find specimens from around the world and some from out of this world-antiques are also available. His web site is www.wyomingfossils.com

His email address is on the website. If you email him, please use on the subject line: **Wyo in July**.

The Average Temperature in Kemmerer in July is 65-70 degrees at the elevation of 7400 feet. **"How much better than this can you get!"**

You may call me at 928-536-7209 or email me at rocknlow@frontiernet.net if you have any questions. If you email me please use the same in your subject line: **Wyo in July**.

Eunice McQuiston – White Mountain Gem & Mineral Club – Show Low, Arizona

Remember to collect only what you need.

The time is drawing closer for this trip. It is not too late to sign-up although finding a room may be more difficult. With the opening of Best Western Fossil Country Inn and Suites on April 20th, this may be your answer to lodging.

There are a few changes to the "events" schedule you should know about. The Sweetwater agate, Jade Slicks and the addition to Wyoming opal have been combined into one event. Also, the Fish Fossil and Crinoid events are ½ day separate events. Included in this up-date are registration forms that I urge you to fill out and return to Creative Creations as soon as possible.

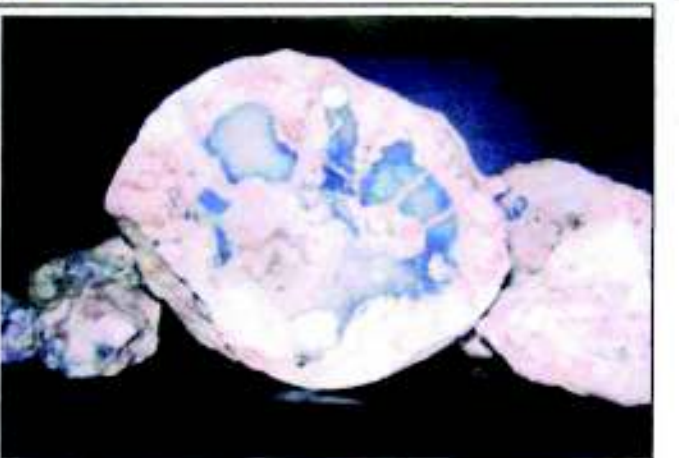
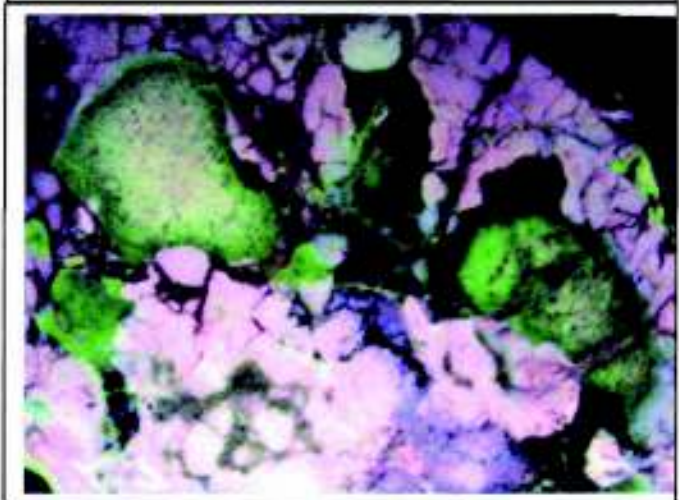
The BLM in Wyoming has no problem with rockhounds collecting as long as you adhere to the 25 pounds plus one rock per person (this does not apply to the fish quarries). Use reasonable judgment. They ask that you leave the land the way you found it or better.

I would like to invite all rockhounds and their guests to an "open" room at the Fossil Butte motel on July 12 between 4 and 7 Pm. I don't know my room number yet, but I bet you will spot it. This get together will give us a chance for introduction and to sign -in-get your name on a list for a drawing later on. Bring snacks if you can.

This is the final up-date for this trip but will certainly answer any questions, at any time, if I can.

Enjoy the pictures of what you can find...

Have a great trip/have a safe trip- Eunice McQuiston



Pictures- above: Blue Forest Petrified wood
Pictures to the right - top to bottom: Fossil Fish,
Sweetwater agate under fluorescence, Sweetwater
Agate (normal light), Wyoming Blizzard Stone

May Show

Volunteers needed for May 23 and 24 show

1. Set-up on 22nd and take down after show-clean up
2. Entrance ticket sales
3. Raffle Ticket Sales-donations from club members and vendors
4. Spinning Wheel
5. Silent Auction-donations from club members welcome
6. Fluorescent mineral display

Need someone to volunteer to fill display cases. Ask fellow members to display their special rocks-six cases need to be filled

Sign-up sheet is attached for the May meeting or call to sign-up.
(928)536-7209

Bits and Chips

The hummingbirds are back. Five days later than last years. The Juice is out! Fred McQuiston

To ward off rattlesnakes, wet the bottom of your pants legs or shoe strings with Turpentine. They detest the odor and will go the other way. Pour around campsite and they will never cross it.

Information from the North Idaho Mineral Club- 04/09

Best Wishes to Lynn Wheeler after her vehicle accident, Laura Scholten after her surgery, and George Stokes who has health issues. Recover and Be well soon.
Nancy M

Wyoming in July – The Fossil Butte Motel has three rooms left out of the 14. If you haven't made your reservation yet. You might try them. (309) 877- 3996
Eunice

EDUCATION

Education Program

Tonie MonDragon provided this month's education program on the topic of enameling, and more specifically enamel bead making. Enameling is the process of applying glass to a vessel (bead/plaque/plate/bowl).

The history of the art form of enamel dates back to Ancient Egypt and Ancient Greece. It was an art form also adopted by the Romans, Celts, Russians and Chinese and the process has been used throughout history in many forms. Enamel can be produced in several ways including powering of colored glass or mixing colorless glass with colorants such as a metallic oxide (cobalt, iron, neodymium). The ancient Egyptians applied enamels to pottery and stone objects. The ancient Greeks applied enamel to metal objects.

Once applied the enameled vessel (whether glass, ceramic or metal) is fired at a temperature high enough to melt the enamel but low enough so that the vessel is not melted. Enamel was a favorite process of artist Peter Carl Faberge for his fantastic eggs, Battersea copper boxes, Limoges pottery, Byzantine Cloisonné, and artist George Stubbs and other painters of portrait miniatures. Enameling was a favorite technique of the Art Nouveau jewelers as well.

In the early 20th century more practical uses were found in manufacturing advertising signs, interior oven walls, cooking pots, exterior walls of kitchen appliances, cast iron bathtubs, and in chemical processes.

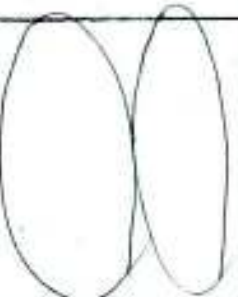
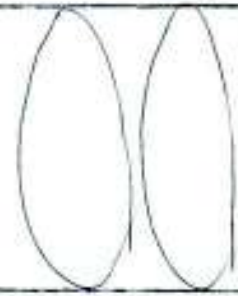
Only a small investment is necessary to make enamel beads: propane torch head and cylinder, copper tubing and tube cutter, stainless steel rods of a size that will hold the copper tubing and vitreous enamel mesh, safety glasses and a fire extinguisher. Tools you might already have are pliers, a file and a ceramic tile. In order to anneal the finished beads (make them less breakable) you would need some vermiculite and a crock-pot or coffee can and a hot plate, or a kiln.

Supplies and instructions (written and video) are available from the following:

Thompson Enamel at www.thomopsonenamel.com
Schlarfer's Enameling Supplies at www.enameling.com
and Enamel Supply Co. at eqsco@comcast.net

Tonie will be demonstrating enamel bead making at the Annual Show.

March 2009

<p>May Volunteer 3:30-6:09</p>	<p>one Front Entrance</p>	<p>table 8'</p>	<p>8' table</p>	<p>8' table</p>	
<p>9-12</p>	<p>2 members Jan S. Nanz M.</p>	<p>1 member</p>	<p>2 members Tara + Todd Cluff</p>	<p>2 members Wayne S. Bill S.</p>	<p>Eunice</p>
<p>12-3</p>	<p>Tonie M. Kathleen V.</p>	<p>Gary A</p>	<p>Tisha P. Kathy A.</p>	<p>George S. Karen S.</p>	<p>Nanz</p>
<p>3-6</p>	<p>Summer + Edie</p>	<p>Ursula W</p>	<p>Jan + Gary Patricia</p>	<p>Bill S Linda S</p>	
<p>Sunday after 9:09</p>	<p>↓</p>	<p>↓</p>	<p>↓</p>	<p>↓</p>	
<p>9-11:30</p>	<p>Jan S. Nanz M.</p>	<p>Sandra A</p>	<p>Summer + Edie</p>	<p>Wayne S. Eunice</p>	
<p>11:30-2</p>	<p>Tonie M. Kathleen V.</p>	<p>Sandra A (ursula) break for Sandra</p>	<p>Tim P. Gloria P.</p>	<p>George S. Karen S.</p>	<p>Nanz</p>
<p>2-4 closing</p>		<p>Sandra A</p>		<p>Bill S. Linda S.</p>	

Call Eunice to volunteer (928) 536-7209



White Mountain Gem & Mineral Club, Inc.
A Non-profit corporation

13th Annual Gem, Mineral, Fossil, Jewelry Show and Sale

MEMORIAL DAY WEEKEND

SATURDAY, MAY 23RD 9AM – 6PM

SUNDAY, MAY 24TH 9AM – 4PM

FEATURING:

SOUTHWEST DEALERS IN MINERALS, GEMS, FOSSILS,
JEWELRY, BEADS, FINDINGS, LAPIDARY EQUIPMENT

WITH

EXHIBITS INCLUDING FLUORESCENT MINERALS
"ORDINARY BECOMING EXTRAORDINARY"

&

ARIZONA MINING AND MINERAL MUSEUM
WITH FREE MINERALS FOR KIDS YOUNG AND OLD

SHOW LOCATION

**SHOW LOW INTERMEDIATE SCHOOL GYM
500 W. OLD LINDEN RD.
SHOW LOW, AZ.**

PRESIDENT AND SHOW CONTACT
PETE SCHOLTEN petenljs@citlink.net
White Mountain Gem & Mineral Club
P.O. Box 3504
Show Low, AZ. 895902

Admission: \$2.00 donation for adults
Under 16 free with paid adult
Free Parking



White Mountain Gem & Mineral Club
P.O. Box 3504
Show Low, AZ 85902-3504

Member:
Rocky Mountain Federation
Of Mineralogical Societies



American Federation of
Mineralogical Societies



13th Annual Gem, Mineral, Fossil, Jewelry Show and Sale
White Mountain Gem & Mineral Club, Inc
A Non-profit Organization

Memorial Day Weekend
Saturday May 23rd 9:00 AM to 6:00 PM
Sunday May 24th 9:00 AM to 4:00 PM

Show Location **SHOW LOW Intermediate School Gym**
500 W Old Linden RD
SHOW LOW, AZ

Show Contact and President- Pete Scholten

petenljs@citilink.net

Admission \$2.00 donation for Adults
Under 16 free with paid adult
Free Parking